



RULES AND REGULATIONS 50-70

Issued: 1st March 2026

V3 - Updated 26th May 2026



Contents

| | |
|--|----|
| Regulation 50: National Championships (County Stages) | 4 |
| Regulation 51: National Championships (Final Stages) | 8 |
| Regulation 52: Bowls England Managed National Championships | 10 |
| Regulation 53: Inter-County Championship Women’s (Johns Trophy) & Men’s (Middleton Cup) | 16 |
| Regulation 54: Inter-County Women’s (Walker Cup) & Men’s (Balcomb Trophy) | 19 |
| Regulation 55: Inter-County Junior Women (Amy Rose Bowl) & Men (White Rose Trophy) | 21 |
| Regulation 56: O60 Mixed Inter-County Championship | 23 |
| Regulation 57: National Top Club (Women) | 25 |
| Regulation 58: National Top Club (Men) | 27 |
| Regulation 59: National Club Two Fours (Open) | 29 |
| Regulation 60: National Club Mixed Over 60s Two Fours (Tony Allcock Trophy) | 31 |
| Regulation 61: National Over 60 Singles..... | 33 |
| Regulation 62: National Over 60 Pairs | 34 |
| Regulation 63: National Champion of Champions Singles..... | 35 |
| Regulation 64: National Mixed Pairs..... | 36 |
| Regulation 65: National Mixed Fours | 37 |
| Regulation 66: National Family Pairs | 38 |
| Regulation 67: National Foundation Pairs | 40 |
| Regulation 68: National Under 17’s Singles..... | 43 |
| Regulation 69: Para Open Singles | 44 |
| Regulation 70: Para Open Pairs | 46 |
| Sanctions..... | 48 |
| Appendices..... | 51 |
| Appendix A1 - Dress code: County Administered National Championships – all Rounds prior to National Finals..... | 51 |
| Appendix A1 (Cont.) - Dress code: County Administered National Championships – all Rounds prior to National Finals | 52 |
| Appendix A2 - Dress code: County Administered National Championships – at National Finals. | 53 |
| Appendix A2 (Cont.) - Dress code: County Administered National Championships – at National Finals | 54 |
| Appendix B1 - Dress code: Bowls England Managed National Championships – Early Rounds... | 55 |



| | |
|--|----|
| Appendix B1 (Cont.) - Dress code: Bowls England Managed National Championships – Early Rounds | 56 |
| Appendix B2 - Dress code: Bowls England Managed National Championships – National Finals | 57 |
| Appendix B2 (Cont.) - Dress code: Bowls England Managed National Championships – National Finals | 58 |
| Appendix C: Draw for Rinks..... | 59 |
| Appendix D: Umpires | 59 |
| Appendix E: Smoking (including Electronic Cigarettes) | 59 |
| Appendix F: Inclement Weather | 60 |
| Appendix G: Bowls | 63 |
| Appendix H: Anti-Doping | 64 |
| Appendix I: Bowls England Policies and Guidelines | 64 |
| Appendix J: Players with Disabilities | 65 |
| Appendix K: Time Limits..... | 66 |
| Appendix L: Slow Play | 68 |
| Appendix M: Code of Conduct | 69 |
| Revisions since March 2026 Publication..... | 70 |

Regulation 50: National Championships (County Stages)

50.1 General

50.1.1 All County Championships (as listed at 50.1.2) leading to National Bowls Finals shall be administered by the relevant County Association. These must be in accordance with the Bowls England Rules and Regulations set out in this document, and in accordance with the current Laws of the Sport of Bowls.

50.1.2 This Regulation refers to the following events:

- Four-Bowl Singles (one player, four bowls each, first to 21 shots)
- Two-Bowl Singles (one player, two bowls each, 21 ends*)
- Pairs (two players, four bowls each, 18 ends*)
- Triples (three players, three bowls each, 18 ends*)
- Fours (four players, two bowls each, 18 ends*)
- U24 Singles (one player, four bowls each, first to 21 shots)
- U24 Pairs (two players, three bowls each, 18 ends*)
- Senior Fours (four players, two bowls each, 18 ends*)

In the event of scores being equal on all events marked with *, then an extra end or ends shall be played until a decision is reached

50.1.3 Championships are only open to members of clubs affiliated to Bowls England. For all junior championships, players must be under the age 24 on the 1st of April in that year. For the senior fours, players must be aged 55 and over on the 1st of April in that year (Sanction B applies).

50.1.4 Players must not enter any Bowls England Championship under an assumed name or allow their name to be submitted by more than one club/county/country in any one year, with the exception the Junior Pairs, where players may belong to different affiliated clubs within the same county (Sanction B applies).

50.1.5 Should a club cease to exist after the entry date, affiliated members are permitted, for one season only, to compete under the name of that club irrespective of which club or clubs they have joined.

50.1.6 County Administrators must submit the number of entrants in each of the National Championships, together with the relevant entry fees to Bowls England no later than the 8th March that year (Sanction A applies).

50.1.7 Entries must be made by one named entrant only.

50.1.7.1 Named entrants are excluded from being a substitute in the same discipline, even when a walkover in the first round has taken place (Sanction B applies).

50.1.7.2 If the named entrant is unable to participate in a team from the outset due to exceptional circumstances, the team may request another

player to replace the named entrant. The original named entrant will be ineligible to represent this team (or any other team) during the remainder of this championship. Requests must be submitted in writing to the County Association.

- 50.1.7.3 If the named entrant changes club within the same county they may request, via their County Association, to have their named entrant status transferred to another entrant in Pairs, Triples & Fours events prior to 1st March in the year of the competition.
- 50.1.7.4 The named entrant may move Singles entries within the same County subject to County Association approval.
- 50.1.7.5 If the named entrant changes County they may request, via their County Association, approval from Bowls England to have their named entrant status transferred to another entrant in Pairs, Triples & Fours events or removed in the case of Singles to allow their participation in future matches that season under the jurisdiction of Bowls England. Deadline for changes is 1st March in the year of the competition.

50.2 Match Arrangements

50.2.1 All County Championships leading to National Finals, unless mutually agreed, must be played on either:

50.2.1.1 Weekdays

Start time no earlier than 6pm or later than 6.30pm

50.2.1.2 Weekends

Start time no earlier than 9.30am or later than 6.30pm

If a player/team fails to be ready within 30 minutes of the start time (Sanction I applies).

50.2.2 Players and Officials selected by Bowls England for International Duties must be accommodated in all stages of the following events:

- Four-Bowl Singles
- Pairs
- Triples
- Fours
- U24 Singles
- U24 Pairs

50.2.3 Suitable flood lighting may be used during any round.

50.2.4 The playing surface must be either vegetation (grass) or a synthetic surface as per the Laws of the Sport (Law 46.4). It is a condition that National Events are played outdoors and that the green has been approved by the relevant County Association. Fixed groundsheets (those laid/pegged down for the duration of the



match) are acceptable for National Championships. Portable groundsheets are permitted subject to the approval of the host venue and/or greenkeeper.

50.2.5 If a player who has been expelled or suspended from a Club is drawn to play at that Club in a Bowls England National Competition game (excluding side games), the Club must either:

- Allow the player access to the changing facilities and green to play the match; or
- Inform the opponent(s) so that the match can be arranged on a neutral green at another Bowls England affiliated Club. The neutral venue should not be any additional mileage from that of the original club.

The opponent(s) must not be required to concede the match under any circumstances.

If the expelled or suspended player is selected to play in a side game, the Club selecting the player must request permission from the Club that imposed the ban for the player to access the premises. If permission is refused, the player must be withdrawn from the side. *(A side game is any match involving more than one rink or discipline.)*

50.2.6 The draw for rink/s to be played on shall be made in accordance with the current Laws of the Sport, refer to Appendix C for guidance (Sanction J applies).

50.2.7 For Inclement Weather refer to Appendix F.

50.2.8 Substitutions

50.2.8.1 In team games, the players competing in the first match will constitute the team. One additional, and the same player, may be used as a substitute provided they have not already played or entered the Championship (Sanction B applies).

50.2.8.2 Substitutes may play in any position (Sanction B applies). If a substitute is required during a game, then the current Laws of the Sport of Bowls (Law 32) apply.

50.2.8.3 If the named entrant is unable to participate in the first match, the named entrant is the only substitute that can be brought into the team in all future rounds unless 50.1.7.2 applies (Sanction B applies).

50.2.9 For dress code please refer to Appendix.

50.3 Qualifiers for National Finals

50.3.1 Every County Association shall be entitled to at least one representative in each Championship discipline. The representative details must be forwarded to Bowls England no later than the Monday of Week Number 32.



50.3.2 County Associations must allocate qualifiers according to their procedure set out at the start of the season. Bowls England reserves the right to change representatives if the need arises following submission.

Regulation 51: National Championships (Final Stages)

51.1 General

- 51.1.1** The final stages of all events listed at 50.1.2 will be played under the current Laws of the Sport of Bowls and in accordance with these regulations.
- 51.1.2** Competitors must adhere to the Player Code of Conduct for National Finals (Appendix K).
- 51.1.3** The Tournament Director shall determine any questions or disputes that may arise, that do not come within the scope of the umpire's duties. The decision of the Tournament Director shall be final and binding.
- 51.1.4** The Tournament Director reserves the right to alter starting times and rinks if it is considered necessary or desirable.
- 51.1.5** The Tournament Director, in consultation with the Greenkeeper, shall be the adjudicators as to whether or not the green is fit for play and shall have the power to postpone play at any point. Should play be postponed the current Laws of the Sport of Bowls shall apply.
- 51.1.6** At the National Finals all bowls shall bear the world bowls stamp in accordance with the current Laws of the Sport of Bowls (Law 53) (Sanction L applies). See Appendix G for clarification.
- 51.1.7** Parental consent forms (where applicable) shall be completed and submitted for any player aged under 18.

51.2 Arrangements for Play

- 51.2.1** Skips/singles players shall collect their scorecards and/or stickers from the Tournament Office before each round and register all substitutes shall be registered with the Tournament Office.
- 51.2.2** Parental consent forms (where applicable) shall be completed and submitted.
- 51.2.3** Competitors must be on the green ready to play within 15 minutes of the agreed start time (Sanction N applies)
- 51.2.4** Competitors shall adhere to the Bowls England Slow Play Guidance (Sanction O applies)
- 51.2.5** Matches must be conceded where it is not possible for the losing team/individual to win as per the Laws of the Sport of Bowls (Law 26.3).
- 51.2.6** After the end of each match the winning skip (or player in Singles) shall take the signed scorecard/s to the Tournament Office immediately. Failure to do so may lead to disqualification (Sanction P applies)



51.2.7 Players may only participate in one event at the same time at the National Finals.

51.2.8 For dress code please refer to Appendix A2.

51.2.9 In all rounds at the National Bowls Finals, if a jack is declared dead once the time limit has been reached, the jack is to be re-spotted two metres from the ditch and on the centre line (the T). If the spot (T) is partly or completely covered by a bowl, the jack must be placed as close as possible to the covered spot (T), between and in line with that spot (T) and the corresponding spot (T) at the opposite end of the rink, without touching a bowl. Following this end, should the result of the match be a tie, ONE extra end will be played. Should this Extra End be killed, the jack will be re-spotted on the T.

51.3 Trophy Presentation

51.3.1 At the conclusion of all Finals, a trophy presentation to both finalists shall take place on the green (Sanction Q applies).

51.3.2 The Winners of the Four-Bowl Singles, U24 Singles, U24 Pairs, Pairs, Triples, Fours and Senior Fours shall represent England in the British Bowls Championships the following year.

Regulation 52: Bowls England Managed National Championships

52.1 General

52.1.1 All events covered by Regulation 52 shall be administered by Bowls England in accordance with the Bowls England Rules and Regulations set out in this document, and the current Laws of the Sport of Bowls.

52.1.2 These events are only open to members of clubs affiliated to Bowls England (Sanction B applies).

52.1.3 Should a club cease to exist after the entry date, affiliated members are permitted, for one season only, to compete under the name of that club irrespective of which club or clubs they have joined. In addition, the Club Singles Champion shall be eligible to enter the Champion of Champions if the club they qualified from dissolves or amalgamates prior to entries opening.

52.2 Competition Types

52.2.1 These events consist of the following:

- Inter-County events
- Inter-Club events
- Individual national disciplines – (Men's, Women's, Mixed & Open)

52.2.1.1 Inter-County events consist of:

- Johns Trophy
- Walker Cup
- Amy Rose Bowl
- Middleton Cup
- Balcomb Trophy
- White Rose Trophy
- O60 Mixed Inter-County

52.2.1.2 Players must not enter any Bowls England Inter-County events under an assumed name or allow their name to be submitted by more than one County/Country in any one year. Players must represent the County in which they have entered the National Championships (events shown under Regulation 52) and must not participate in National Championships in another country or represent another Country in International Teams (Sanction D applies).

52.2.1.3 Inter-Club events consist of:

- Men's Top Club
- Women's Top Club

- Club Two Fours (Open)
- Club Over 60 Mixed Two Fours (Tony Allcock Trophy)

52.2.1.4 Players must not enter any Bowls England Inter-Club events under an assumed name or allow their name to be submitted by more than one Club/County/Country in any one year. Players must represent the Club which they have entered National Championships (events shown under Regulation 52) and must not enter National Championships in another Country or represent another Country in International Teams. (Sanction D applies).

52.2.1.5 Individual national disciplines consist of:

- Family Pairs
- Champion of Champions
- O60 Singles
- O60 Pairs
- Mixed Pairs
- Mixed Fours
- Foundation Pairs
- Under 17 Singles

52.2.1.6 Players must not enter any Bowls England individual events under an assumed name or allow their name to be submitted by more than one team in any one year (Sanction B applies).

52.2.1.7 Under 17 Singles: Players must represent the County in which they have entered the National Championships and must not participate in National Championships in another country or represent another Country in International Teams (Sanction D applies).

52.2.2 Entries must be made by one named entrant only.

52.2.2.2 Named entrants are excluded from being a substitute in the same discipline, even when a walkover in the first round has taken place (Sanction B applies).

52.2.2.3 If the named entrant is unable to participate in a team from the outset due to exceptional circumstances, the team may request another player to replace the named entrant. The original named entrant will be ineligible to represent this team (or any other team) during the remainder of this championship. Requests must be made in writing to Bowls England.

52.2.2.4 If the named entrant changes club/county they may request approval from Bowls England to have their details/entries amended prior to 1st March in the year of the competition. Any changes after this date will incur a charge of £80.

52.2.2.4 Should an individual who as a named entrant entered National Events change county during the close season, they may request



written approval from Bowls England for their National Competition entries to be transferred to somebody else to allow their participation in future matches that season under the jurisdiction of Bowls England. Deadline for changes 1st March in the year of the competition.

Match Arrangements (Excluding Regional Finals & Inter-County Performance Events)

52.3.1 The Competition Areas, draw and completion dates for all National events shall be made by Bowls England. Area draws shall be based upon the entry figures from the previous year. The format of rules for the individual events shall be found under the corresponding regulation.

52.3.2 In all qualification rounds (excluding inter-county events), the Challenger shall be responsible for the match arrangements and should be responsible for the payment of rink fees (where applicable) and umpire fees (when appointed), except when matches take place at a neutral venue when all costs shall be shared by both participants/teams/sides.

52.3.3 In singles the challenger is responsible for arranging a marker.

52.3.4 The appointment of an umpire at matches prior to the National Finals in Individual or Inter-Club Events is entirely optional.

52.4 Match Location

52.4.1 Matches shall be played on the challengers affiliated green as shown on the draw unless another venue is mutually agreed by both parties.

52.4.2 If the mileage exceeds 200 miles round trip (club to club for club-based events and county centre to match venue for county-based events via the shortest route on google maps) matches must be played on a neutral green arranged by the challenger. Routes involving teams from the Isle of Wight must be calculated via the Southampton ferry.

52.4.3 All rounds in the final stages prior to the national finals shall be played on a neutral green arranged by the challenger. In the round prior to qualifying for the National Finals, the Men's and Women's Top Club All-England Round of 16 will be played on a predetermined set date. All area finals as defined by Bowls England, and subsequent rounds shall be played on a neutral green (unless mutually agreed).

52.4.4 If a player who has been expelled or suspended from a Club is drawn to play at that Club in a Bowls England National Competition game (excluding side games), the Club must either:

- Allow the player access to the changing facilities and green to play the match; or



- Inform the opponent(s) so that the match can be arranged on a neutral green at another Bowls England affiliated Club. The neutral venue should not be any additional mileage from that of the original club.

The opponent(s) must not be required to concede the match under any circumstances.

If the expelled or suspended player is selected to play in a side game, the Club selecting the player must request permission from the Club that imposed the ban for the player to access the premises. If permission is refused, the player must be withdrawn from the side. *(A side game is any match involving more than one rink or discipline.)*

52.4.5 Neutral Greens should be approximately midway or equal distance between the two clubs/counties unless mutually agreed.

52.4.6 The use of the same neutral green in future rounds is permissible.

52.4.7 Suitable flood lighting may be used during any round.

52.4.8 The playing surface must be either vegetation (grass) or a synthetic surface as per the Laws of the Sport (Law 46.4). It is a condition that National Events are played outdoors and that the green has been approved by the relevant County Association. Fixed groundsheets (those laid/pegged down for the duration of the match) are acceptable for National Events. Portable groundsheets are permitted subject to the approval of the host venue and/or greenkeeper.

52.5 Offering of dates

52.5.1 For an opening match, the Challenger must offer their opponent three dates of play no later than 14 days in advance of the closing date of the round. Dates offered must fall within the window of the opening round (Sanction E). When either a challenger or opponent of the tie is competing in an earlier round, and the awaiting opposition has a bye to the next round then rule 52.5.2 will apply.

52.5.2 For all subsequent rounds, the Challenger must offer their opponent, within 24 hours (one day) after the closing date of the previous round, three dates of play. The three dates offered must fall within the window of the round (Sanction F).

52.5.3 Failure by the Challenger to offer eligible dates – Opponent becomes 'Challenger' and must make all match arrangements within 48 hours (two days) of the previous round (Sanction E & Sanction F)

52.5.4 Matches may be played in advance of 11 days of the opening round closing date or prior to the closing date of the previous round only by mutual agreement.

52.5.5 A minimum of 72 hours (three days) after the close of the previous round, 11 days prior in the case of a first match is required for any dates offered to be eligible unless mutually agreed (Sanction E applies).

52.5.6 The offering of two different start times on a single date does not count as two dates.

52.5.6.1 At least one of the dates offered must be a Saturday or Sunday. There is no requirement that a weekday date must be offered. Bank holidays are classed as either a weekend OR weekday date.

52.5.6.2 The start time for any match shall be set by the Challenger when the dates are offered and, unless mutually agreed, must be played on either:

(1) Weekdays

Start time no earlier than 6pm or later than 6.30pm*

* The Challenger in O60 Singles, O60 Pairs and the Mixed Over 60 Inter-Club Two Fours (Tony Allcock Trophy) may offer a start time between 9.30am and 6.30pm on weekdays

(2) Weekends

Start time no earlier than 9.30am or later than 6.30pm

If a player/team fails to be ready to play within 30 minutes of the agreed start time Sanction I applies.

52.5.7 The opponent must accept a date for play no later than 72 hours (three days) after the close of the previous round (Sanction F applies). For a first match – 12 days prior to the close of the round applies (Sanction E applies).

52.5.8 No extension of the closing date for any round shall be granted for any reason whatsoever.

52.6 General Matters

52.6.1 The draw for rink/s to be played on shall be made in accordance with the current Laws of the Sport, please refer to Appendix C for guidance (Sanction J applies).

52.6.2 For dress code please refer to Appendix B1 & B2. If not adhered to Sanction K applies.

52.6.3 Players may only participate in one match at the same time whether during qualifying rounds or the National Finals.

52.6.4 For Inclement Weather refer to Appendix F.

52.6.5 The result shall be submitted by the winning player or team/side to Bowls England immediately using one of the approved notification methods (Sanction Q applies).



52.6.6 Parental consent forms (where applicable) shall be completed and submitted for any player aged under 18 years of age.

52.7 Player Code of Conduct

Competitors must adhere to the Bowls England Player Code of Conduct



Regulation 53: Inter-County Championship Women's (Johns Trophy) & Men's (Middleton Cup)

This regulation should be read in conjunction with Regulation 52 – Bowls England Managed National Championships

53.1 General

- 53.1.1** This competition is restricted to one side per county open to all County Associations who are Members of Bowls England.
- 53.1.2** Each County Association shall forward to Bowls England, the entries in each of the Inter-County Competitions together with any relevant entry fees.
- 53.1.3** Each County shall be represented by a side consisting of six rinks of four players, all of whom shall be members of an affiliated club to their County Association.
- 53.1.4** Failure to field 24 players shall result in a walkover (Sanction I applies).
- 53.1.5** All matches shall start at 2pm unless mutually agreed. The last round of group games within the same group, (excluding dead rubbers), shall start at the same time (2pm unless mutually agreed between all competing counties).
- 53.1.6** In all matches in the group stages, the two participating counties shall arrange for fixtures to be played either:
- 53.1.6.1 At a venue in one of the two counties (home team to arrange umpire and pay costs accordingly)
 - 53.1.6.2 On a 3 rink home/3 rink away basis (each county to arrange umpire and pay costs accordingly)
 - 53.1.6.3 At a neutral venue midway between the two counties (two counties to mutually arrange and pay costs accordingly)
- Regulation 53.1.6 replaces reg 52.2.4 for the group stages.
- In the group stages, the same will apply to year one and year two of the group tie.
- 53.1.7** Counties shall provide bowls stickers in all rounds up to and including the quarter-finals unless provided by a sponsor

53.2 Group Stages

- 53.2.1** Teams will be divided into eight groups as determined by Bowls England in accordance with regional demands, with each group played as a round robin league. Each group winner shall progress to the quarter-finals. Thereafter is



played to a knockout format. Each rink shall play 18 ends, two bowls each player.

- 53.2.2** 22 points are available for each match in the group stages – 2 points for a rink win, 1 point for a rink tie and 10 points for the team with the highest aggregate score. In an event of a tie on shots 5 points will be awarded to each team.
- 53.2.3** Should a match end as a tie (both shots and points) after 18 ends then an extra end or ends shall be played by all six rinks simultaneously until there is a winner. The total number of shots on all six rinks shall count on the extra end and the winning team reported to Bowls England. **The extra end shall not form part of the score within the group stages** but shall be used to separate the two counties if they are level at the conclusion of the group stages after points and shots difference have been taken into account.
- 53.2.4** Where a county is unable or refuses to fulfil a fixture in the group, they will be removed from the competition immediately and any matches played previously declared 'void'. If both counties agree not to fulfil a fixture (dead rubber) match points will be shared equally to both sides in order that the group can be completed on the Bowls England competition portal.
- 53.2.5** The county gaining the greatest number of points in each group shall be declared the winner of that section. Should two counties be equal in points and also in shot difference then the winner shall be ascertained on the result of the match already played between the two counties.
- 53.2.6** Before the start of the match, the nominated managers shall toss a coin for the choice of jack (first end), the winner having the choice of keeping or giving the jack away.

53.3 Quarter-Finals

- 53.3.1** Matches shall be played either in an adjoining county or on an affiliated green located approximately midway between the two [County Centre's](#) involved in the tie. Both parties can mutually agree to play on any affiliated green within one of the participating counties.
- 53.3.2** The two counties concerned shall be responsible for arranging an Umpire (via the English Bowls Umpires Association). Costs for green fees/umpiring fees shall be shared by both counties.
- 53.3.3** Before the start of the match, the nominated managers shall toss a coin for the choice of jack (first end), the winner having the choice of keeping or giving the jack away. Then a further toss of a coin for choice of jack (extra end) should one be needed. The winner has the option to make the choice immediately after the 18th end has been played. The winner shall be decided on the total number of shots of all rinks. There are no points for individual rink wins. In the event of a tie after 18 ends then an extra end or ends shall be played by all six rinks simultaneously until there is a winner. The total number of shots on all six rinks shall count on the extra end.



53.4 Final Stages

53.4.1 Each county qualifying for the Semi-Final stage shall supply to Bowls England the names of six rinks and four reserves upon request. The Semi-Final and Final shall be played during the National Bowls Finals.

53.4.2 Bowls England shall provide bowls stickers for the Semi-Finals and Final.

53.4.3 The Winner and Runner-Up respectively shall receive a maximum of 28 Winners/Runners-Up medals.



Regulation 54: Inter-County Women's (Walker Cup) & Men's (Balcomb Trophy)

This regulation should be read in conjunction with Regulation 52 – Bowls England Managed National Championships

54.1 General

This competition shall be open to all County Associations who are Members of Bowls England.

Bowls England shall enter one team from each county in each of the Inter-County Competitions.

Every county shall be represented by a side consisting of nine players, all of whom shall be members of an affiliated club to their County Association. Failure to field nine players shall result in a walkover (Sanction I applies). No player shall play for more than one county in any one year. Players entering National Championships in another country are not eligible to participate (Sanction D applies).

Bowls England shall determine the dates for all rounds, groups and venues.

54.2 Format of Play

Players will participate in the following disciplines:

- Pairs (three bowls per player, 18 ends)
- Triples (two bowls per player, 18 ends)
- Fours (two bowls per player, 15 ends)

The county side may be changed ahead of the start of each individual match/round.

Each match will be limited to a time limit of 2 hours 30 minutes (including trial ends). All ends must be played in all disciplines unless a discipline is 'timed out'.

In the event of a 'dead end' the jack will be re-spotted on the T (or as near as possible to the T in line with the current Laws of the Sport)

54.3 Scoring – Regional Finals

- Per discipline – 2 pts for a win; 1 pt for a draw
- Per match – 2 pts for a win; 1 pts for a draw

The county that tops the group at the conclusion of the group stages on will qualify for the National Bowls Finals.



This will be determined by (in order):

- Overall points
- Overall shots difference
- Overall shots scored

If there is a 'tie' between two counties once these factors are taken into account, the result (shots aggregate) in the match between the two counties concerned will determine the group winner. Should shots be level at conclusion of the match, the winning team will be determined by the winner of the Fours fixture between those two counties. Should this still not produce a winner, the Fours players will play a one-end tie-break to determine the winner.

54.3 Scoring – Preliminary Round & Final Stages (National Finals)

In the final stages the winning team will be determined on shots aggregate across the three disciplines. Should shots be level at conclusion of the match, the winning team will be determined by the winner of the Fours fixture. Should this still not produce a winner, the Fours players will play a one-end tie-break to determine the winner.

Matches at the National Bowls Finals must be conceded once the overall result is determined.

54.5 Final Stages

The final stages consisting of the Quarter-Finals, Semi-Finals and the Final shall be played on a knockout basis during the National Bowls Finals.

Each county qualifying for the final stages shall supply to Bowls England its squad's details upon request.

Bowls England shall provide bowls stickers for final stages.

The Winner and Runner-Up shall receive a maximum of 11 Winners medals.



Regulation 55: Inter-County Junior Women (Amy Rose Bowl) & Men (White Rose Trophy)

This regulation should be read in conjunction with Regulation 52 – Bowls England Managed National Championships

55.1 General

The competition shall be open to all County Associations who are members of Bowls England.

Each County Association may submit up to two entries in each Inter-County Junior event. If more than 48 teams are entered, a ballot will be held among those County Associations that have submitted two entries to determine the final places.

Each County may enter more than one team of five players. With the approval of Bowls England, Counties may combine with neighbouring Counties to form teams in order to ensure full participation for players aged under 25 across England.

All players shall be members of clubs affiliated to their County Association and under 25 years of age by 1st April in the year of the competition. Players entering National Championships in another country are not eligible to participate (Sanction D applies).

Substitution of players is permitted after the conclusion of end six in each discipline. Players may be replaced by squad members who are not participating in the same session, and any substitute must take over the same playing position as the player they replace.

Junior/Cub bowls may be used.

Bowls England shall determine the dates for all rounds, groups and venues. Each group to be played as a round robin league, each group winner shall progress to the quarter-finals which will take place at the National Bowls Finals. Thereafter the event is played to a knockout format.

55.2 Format of Play

Players will participate in the following disciplines:

- Pairs – 12 ends three bowls per player
- Triples – 12 ends two bowls per player

Counties may change players/disciplines prior to the start of each individual match



Each session will have a time limit of 1 hour 15 minutes (including trial ends). All ends must be played in all disciplines unless a discipline is 'timed out'.

In the event of a 'dead end' the jack will be re-spotted on the T (or as near as possible to the T in line with the current Laws of the Sport)

Before the start of each match, the nominated managers shall toss a coin for the choice of jack (first end), the winner having the choice of keeping or giving the jack away.

55.3 Scoring – Regional Finals

- Per discipline – 2 pts for a win; 1 pt for a draw
- Match aggregate – 2 pts for a win; 1 pts for a draw

The county/team that tops the group at the conclusion of the group stages will qualify for the National Bowls Finals. This will be determined by (in order):

- Overall points
- Overall shots difference
- Overall shots scored

Should there still be a 'tie' between two counties once these factors are taken into account, the result (shots aggregate) in the match between the two counties concerned will determine the group winner. Should shots be level at conclusion of the match, the winning team will be determined by the winner of the Triples fixture between those two counties. Should this still not produce a winner, the Triples players will play a one-end tie-break to determine the winner.

55.4 Scoring – Final Stages

In the final stages the winning team will be determined on shots aggregate across the two disciplines. Should shots be level at conclusion of the match, the winning team will be determined by the winner of the Triples fixture. Should this still not produce a winner, the Triples players will play a one-end tie-break to determine the winner.

55.5 Final Stages

The final stages consisting of the Quarter-Finals, Semi-Finals and the Final shall be played on a knockout basis during the National Bowls Finals.

Each county qualifying for the Quarter-Final stage shall supply to Bowls England the names of five players and two reserves upon request.

Bowls England shall provide bowls stickers for the Final Stages of this event.

The Winner and Runner-Up respectively shall receive a maximum of 7 Winners medals.

Regulation 56: O60 Mixed Inter-County Championship

This regulation should be read in conjunction with Regulation 52 – Bowls England Managed National Championships

56.1 General

- 56.1.1** This competition is restricted to one side per county open to all County Associations who are Members of Bowls England.
- 56.1.2** All players shall be aged 60 years or over on April 1st in the year of the competition (Sanction D applies).
- 56.1.3** A County side shall be represented by a side consisting of six rinks of four players (two men and two women per rink), all of whom shall be members of an affiliated club to their County Association (Sanction D applies).
- 56.1.4** Failure to field 24 players shall result in a walkover (Sanction I applies).
- 56.1.5** All matches shall start at 11.30am unless mutually agreed.
- 56.1.6** In matches up to and including the quarter-finals, the participating counties shall arrange for fixtures to be played either:
- 56.1.6.1 At a venue in one of the two counties (home team to arrange umpire and pay costs accordingly)
 - 56.1.6.2 On a 3 rink home/3 rink away basis (each county to arrange umpire and pay costs accordingly)
 - 56.1.6.3 At a neutral venue midway between the two counties (two counties to mutually arrange and pay costs accordingly)
- 56.1.7** Counties shall provide bowls stickers in all rounds up to and including the quarter-finals unless provided by a sponsor.
- 56.1.8** Each rink shall play 18 ends, two bowls each player. The side with the highest aggregate score across all six rinks at the conclusion of the match will be the winner.
- 56.1.9** Should a match end as a tie on shots after 18 ends then an extra end or ends shall be played by all six rinks simultaneously until there is a winner. The total number of shots on all six rinks shall count on the extra end and the winning team reported to Bowls England.
- 56.1.10** Before the start of the match, the nominated managers shall toss a coin for the choice of jack (first end), the winner having the choice of keeping or giving the



jack away. Then a further toss of a coin for choice of jack (extra end) should one be needed. The winner has the option to make the choice immediately after the 18th end has been played. The winner shall be decided on the total number of shots of all rinks. In the event of a tie after 18 ends then an extra end or ends shall be played by all six rinks simultaneously until there is a winner. The total number of shots on all six rinks shall count on the extra end.

56.1.11 Dress code

- Where the shirt colour is same but design slightly different, players may wear their respective county shirt
- Where the shirt colour is different and/or the design is very different, all players must default to white
- The colour worn below the waist must be the same for all players on the same team

56.2 Final Stages

56.2.1 Each county qualifying for the Semi-Final stage shall supply to Bowls England the names of six rinks and four reserves upon request. The Semi-Final and Final shall be played during the National Bowls Finals.

56.2.2 Bowls England shall provide bowls stickers for the Semi-Finals and Final.

56.2.3 The Winner and Runner-Up respectively shall receive a maximum of 28 Winners/Runners-Up medals.

Regulation 57: National Top Club (Women)

This regulation should be read in conjunction with Regulation 52 – Bowls England Managed National Championships

57.1 General

57.1.1 The competition shall be open to all Clubs affiliated to Bowls England. Clubs may enter more than one side. No player shall play in more than one of those sides entered (Sanction D applies).

57.1.2 Players are required to play from the club in which they play their National Championships. Players entering National Championships in another country are not eligible to participate. In any year a competitor selected to play in Inter-Club Competitions may only represent one club should they belong to more than one club. (Sanction D applies).

57.1.3 Fixed dates may be set by County Associations subject to the following:

- Both clubs participating in the round are affiliated to the same County Association
- The dates for each round set by the County Association shall fall within the round closing dates for that particular round set by Bowls England
- The set date meets the requirement of the playing times/days specified in Regulation 52.5.6.2
- Fixed dates will be utilized for the All-England Round of 16 set by Bowls England.

57.1.4 A club side shall consist of 10 players.

The disciplines are:

- Four Bowl Singles (21 shots)
- Four Bowl Pairs (18 ends)
- Three Bowl Triples (18 ends)
- Two Bowl Fours (18 ends)

The challenger shall have the choice of green and shall make all match arrangements.

57.1.5 Failure to field 10 players shall result in a walk-over (Sanction I applies).

57.1.6 Before the start of the match, the nominated managers shall toss a coin for the choice of jack (first end), the winner having the choice of keeping or giving the jack away, and make the draw for rinks for each discipline.

57.1.7 The format for the competition shall be as follows:

- 1pt for every discipline won, total of four points available.

- In the event of a drawn discipline the point shall be shared, i.e. ½ point each.
- After completion of the four disciplines the winning side shall be decided by the highest number of points.
- In the case of a tie, the winner shall be decided from the total number of shots scored from the four disciplines. Should these be equal as well as the match score, extra ends in the pairs, triples and fours, shall be played to determine the result. A further toss of the coin shall take place, the winner having the choice of keeping or giving the jack away on the extra ends.
- Shots do not count on the extra end – only the result of the three disciplines, i.e. 2-1, 3-0. All disciplines shall be played simultaneously.
- In singles, no shots above 21 will count towards the aggregate score.

57.1.8 Between rounds, team changes are allowed in the side and between disciplines provided the players are members of the same club and have not played for another side during the current competition (Sanction D applies). For this competition only, substitution during play is allowed for the singles player in case of illness or injury. The score being resumed after interruption. Substitutes are allowed during play in the Pairs, Triples and Fours of this event in line with the current Laws of the Sport.

57.2 Final Stages

57.2.1 The Quarter Finals, Semi-Finals and Final consisting of the last eight teams shall compete at the National Bowls Finals. The draw shall be made by Bowls England.

57.2.2 Each Club qualifying for the National Finals shall supply Bowls England the names of the ten players and two reserves upon request. A maximum of 12 National Competition participation badges shall be presented to players involved at the finals.

57.2.3 Bowls England shall provide bowls stickers for the final stages of this event.

57.2.4 The Winners shall be presented with a maximum of 12 medals and a Club Pennant along with 12 medals for the Runners-Up.

Regulation 58: National Top Club (Men)

This regulation should be read in conjunction with Regulation 52 – Bowls England Managed National Championships

58.1 General

58.1.1 The competition shall be open to all Clubs affiliated to Bowls England. Clubs may enter more than one side. No player shall play in more than one of those sides entered (Sanction D applies).

58.1.2 Players are required to play from the club in which they play their National Championships. Players entering National Championships in another country are not eligible to participate. In any year a competitor selected to play in Inter-Club Competitions may only represent one club should they belong to more than one club (Sanction D applies).

58.1.3 Fixed dates may be set by County Associations subject to the following:

- Both clubs participating in the round are affiliated to the same County Association
- The dates for each round set by the County Association shall fall within the round closing dates for that particular round set by Bowls England
- The set date meets the requirement of the playing times/days specified in Regulation 52.5.6.2
- Fixed dates will be utilized for the All-England Round of 16 set by Bowls England.

58.1.4 A club side shall consist of 11 players.

The disciplines are:

- Two Bowl Singles (21 ends)
- Four Bowl Singles (21 shots)
- Four Bowl Pairs (18 ends)
- Three Bowl Triples (18 ends)
- Two Bowl Fours (18 ends)

The challenger shall have the choice of green and shall make all match arrangements.

58.1.5 Failure to field 11 players shall result in a walk-over (Sanction I applies).

58.1.6 Before the start of the match, the nominated managers shall toss a coin for the choice of jack (first end), the winner having the choice of keeping or giving the jack away, a further toss of a coin for choice of jack (extra end) should one be required and make the draw for rinks for each discipline. All disciplines shall start at the same time unless, when arranging the fixture, it is agreed that the singles matches shall be played on the same rink one after the other.

58.1.7 The format for the competition shall be as follows:



- 1pt for every discipline won, total of five points available, the winning side shall be the one winning the most disciplines.
- An extra end shall be played in any discipline should it be a tie – no drawn matches.

58.1.8 If, in any round of this competition, a singles player is unable to continue due to ill health or any other reason, then that discipline shall be conceded. The remaining disciplines should continue to their natural conclusion. Substitutes are allowed during play in the Pairs, Triples and Fours of this event in line with the current Laws of the Sport (Law 33).

58.1.9 Between rounds, team changes are allowed in the side and between disciplines provided the players are members of the same club and have not played for another side during the current competition (Sanction B applies).

58.2 Final Stages

58.2.1 The Quarter Finals, Semi-Finals and Final consisting of the last eight teams shall compete at the National Bowls Finals. The draw shall be made by Bowls England.

58.2.2 Each Club qualifying for the National Finals shall supply Bowls England the names of the eleven players and two reserves upon request.

58.2.3 Bowls England shall provide bowls stickers for the final stages of this event.

58.2.4 The Winners shall be presented with a maximum of 13 medals and a Club Pennant along with 13 medals for the Runners-Up.



Regulation 59: National Club Two Fours (Open)

This regulation should be read in conjunction with Regulation 52 – Bowls England Managed National Championships

59.1 General

59.1.1 The competition shall be open to all Clubs affiliated to Bowls England. Clubs may enter more than one side. No player shall play in more than one of those sides entered (Sanction D applies).

59.1.2 Players are required to play from the club in which they play their National Championships. Players entering National Championships in another country are not eligible to participate. In any year a competitor selected to play in Inter-Club Competitions may only represent one club should they belong to more than one club (Sanction D applies).

59.1.3 Fixed dates may be set by County Associations subject to the following:

- Both clubs participating in the round are affiliated to the same County Association
- The dates for each round set by the County Association shall fall within the round closing dates for that particular round set by Bowls England
- The set date meets the requirement of the playing times/days specified in Regulation 52.5.6.2

59.1.4 A club side shall consist of two rinks of four players, and they shall play 18 ends, two bowls each player. The challenger shall have the choice of green and shall make all match arrangements.

59.1.5 Failure to field eight players shall result in a walkover (Sanction I applies).

59.1.6 Before the start of the match, the nominated managers shall toss a coin for choice of jack (first end), the winner having the choice of keeping or giving the jack away. Then toss a coin to nominate which rink shall play the extra end. The winner to nominate the name of the skip to play the extra end. This shall be declared prior to the match commencing. A further toss of a coin for choice of jack (extra end) should one be required. The winner has the option to make the choice immediately after the 18th end has been played. The total number of shots on both rinks shall determine the winner. In the event of a tie after 18 ends on each rink then an extra end shall be played by the nominated rink to determine the overall winner.

59.1.7 Between rounds, team changes are allowed in the side and between disciplines provided the players are members of the same club and have not played for another side during the current competition (Sanction B applies).



59.2 Final Stages

- 59.2.1** The National finals consisting of the Quarter-Finals, Semi-Finals and the Final shall be played on a knockout basis at a time set by Bowls England. The draw shall be made by Bowls England.
- 59.2.2** The Quarter-Final, Semi-Final and Final shall be played during the National Bowls Finals.
- 59.2.3** Each club qualifying for the Quarter-Final stage shall supply to Bowls England the names of the two rinks and two reserves upon request.
- 59.2.4** Bowls England shall provide bowls stickers for the Semi-Finals and Final.
- 59.2.5** The Winners shall receive a maximum of 10 Winners medals, and a Club Pennant with the Runners-Up receiving a maximum of 10 medals.

Regulation 60: National Club Mixed Over 60s Two Fours (Tony Allcock Trophy)

This regulation should be read in conjunction with Regulation 52 – Bowls England Managed National Championships

60.1 General

- 60.1.1** All players shall be aged 60 years or over on April 1st in the year of the competition (Sanction D applies) and belong to the same affiliated club.
- 60.1.2** Players are required to play from the club in which they play their National Championships. Players entering National Championships in another country are not eligible to participate. In any year a competitor selected to play in Inter-Club Competitions may only represent one club should they belong to more than one club (Sanction D applies).
- 60.1.3** Fixed dates may be set by County Associations subject to the following:
- Both clubs participating in the round are affiliated to the same County Association
 - The dates for each round set by the County Association shall fall within the round closing dates for that particular round set by Bowls England
 - The set date meets the requirement of the playing times/days specified in Regulation 52.5.6.2
- 60.1.4** A club side shall consist of two rinks of four players from its membership in accordance with the National Competition regulations (two men and two women per rink) and they shall play 18 ends, two bowls each player. The challenger shall have the choice of green and shall make all match arrangements.
- 60.1.5** Failure to field eight players shall result in a walk-over (Sanction I applies).
- 60.1.6** Before the start of the match, the nominated managers shall toss a coin for choice of jack (first end), the winner having the choice of keeping or giving the jack away. Then toss a coin to nominate which rink shall play the extra end. The winner to nominate the name of the skip to play the extra end. This shall be declared prior to the match commencing. A further toss of a coin for choice of jack (extra end) should one be required. The winner has the option to make the choice immediately after the 18th end has been played. The total number of shots on both rinks shall determine the winner. In the event of a tie after 18 ends then an extra end shall be played by the nominated rink to determine the overall winner.
- 60.1.7** Between rounds, team changes are allowed in the side and between disciplines provided the players are members of the same club and have not played for another side during the current competition (Sanction B applies).



60.2 Final Stages

- 60.2.1** The National finals consisting of the Quarter-Finals, Semi-Finals and the Final shall be played on a knockout basis at a time set by Bowls England. The draw for the Quarter-Finals, Semi-Finals and Final shall be made by Bowls England.
- 60.2.2** The Quarter-Final, Semi-Final and Final shall be played during the National Bowls Finals. A maximum of 10 National Competition participation badges shall be presented to players involved.
- 60.2.3** Each club qualifying for the Quarter-Final stage shall supply to Bowls England the names of the two rinks and two reserves upon request.
- 60.2.4** Bowls England shall provide bowls stickers for the Semi-Finals and Final.
- 60.2.5** The Winners shall receive a maximum of 10 Winners medals, and a Club Pennant with the Runners-Up receiving a maximum of 10 medals.



Regulation 61: National Over 60 Singles

This regulation should be read in conjunction with Regulation 52 – Bowls England Managed National Championships

61.1 General

- 61.1.1** The competition shall be open to all members of clubs affiliated to Bowls England.
- 61.1.2** Each player shall have reached their 60th birthday by 1st April in the year of the competition. (Sanction B applies)
- 61.1.3** Players shall play from the same county in which they play their National Championships. Players entering National Championships in another country are eligible to participate. (Sanction B applies)
- 61.1.4** Senior Singles matches shall be 21 shots (four bowls each player).

61.2 Final Stages

- 61.2.1** The last 16 shall compete at the National Finals on a knockout basis at a time set by Bowls England. The draw shall be made by Bowls England.
- 61.2.2** All players involved at the National Finals shall receive a National Competition participation badge.
- 61.2.3** Bowls England shall provide bowls stickers for the final stages of this event.
- 61.2.4** The Winner and Runner Up shall be presented with a medal and invited to the Champions Dinner. The Winner will receive a Winner's Jacket.



Regulation 62: National Over 60 Pairs

This regulation should be read in conjunction with Regulation 52 – Bowls England Managed National Championships

62.1 General

- 62.1.1** The competition shall be open to all members of clubs affiliated to Bowls England.
- 62.1.2** Each player shall have reached their 60th birthday by 1st April in the year of the competition. (Sanction B applies)
- 62.1.3** The two players in the Senior Pairs shall be members of an affiliated club within the same county. (Sanction B applies)
- 62.1.4** Players shall play from the same county in which they play their National Championships. Players entering National Championships in another country are eligible to participate. (Sanction B applies)
- 62.1.5** Senior Pairs shall be 18 ends (three bowls each player). In the event of the scores being equal when all ends have been played an extra end or ends shall be played until a decision is reached.
- 62.1.6** The two players taking part in the first match constitutes the original team and shall normally play together throughout the competition. In the event of a substitute being required, one and the same player may come from any club, in the same county, providing they have not already played in the same competition, however, one of the original players shall play in all rounds. The substitute may play in any position. (Sanction H applies).

If the named entrant is unable to participate in the first match, the named entrant is the only player (substitute) that can be brought into the team in all future rounds unless 52.2.2.2 applies.

62.2 Final Stages

- 62.2.1** The last 16 shall compete at the National finals on a knockout basis at a time set by Bowls England. The draw shall be made by Bowls England.
- 62.2.2** Each Team qualifying for the National Finals final stage shall supply to Bowls England the name of their partner upon request. The players involved at the National Finals shall receive a National Competition participation badge.
- 62.2.3** Bowls England shall provide bowls stickers for the final stages of this event
- 62.2.4** Both Winners and Runners Up shall be presented with a medal and invited to the Champions Dinner. The Winners will each receive a Winner's Jacket.

Regulation 63: National Champion of Champions Singles

This regulation should be read in conjunction with Regulation 52 – Bowls England Managed National Championships

63.1 General

- 63.1.1** The competition shall be open to all clubs affiliated to Bowls England.
- 63.1.2** Open to all male and female Club Championship Singles Champions from the previous season only. If the singles Champion is not able to enter no substitution is permissible. Sanction B applies for any entrants who do not meet the eligibility criteria above.
- 63.1.3** Entrants will represent the club where they qualified and placed in the area that the club is assigned to.
- 63.1.4** In the event of a member being the Singles Champion of more than one affiliated club during the same season, only one entry for that player will be accepted – this being the Club from where the player entered events listed at [1] in the season in the year of qualification.

[1] County Singles, Pairs, Triples, Fours, U24 singles, O55 Fours, Two Bowl Singles

- 63.1.5** Players who have moved club during the close season shall still be eligible to enter the Champion of Champions providing that Bowls England receives written approval from the Club Secretary where they secured qualification no later than 1st March in the year of the competition (Sanction C applies).
- 63.1.6** If Club approval is granted the entrant will be placed into the respective area of their new club.
- 63.1.7** Each match shall be 21 shots, four bowls each player.

63.2 Final Stages

- 63.2.1** The last 8 shall compete at the National Finals on a knockout basis at a time set by Bowls England. The draw shall be made by Bowls England.
- 63.2.2** Each player involved in the National finals shall receive a participation badge.
- 63.2.3** Bowls England shall provide bowls stickers for the final stages of this event.
- 63.2.4** Both Winner and Runner Up shall be presented with a medal and invited to the Champions Dinner. The Winner will receive a Winner's Jacket.

Regulation 64: National Mixed Pairs

This regulation should be read in conjunction with Regulation 52 – Bowls England Managed National Championships

64.1 General

- 64.1.1** The competition shall be open to all members of clubs affiliated to Bowls England.
- 64.1.2** A team shall comprise of one man and one woman. Either player may skip.
- 64.1.3** Players shall play from the same county in which they play their National Championships, with the exception of those clubs affiliated to two counties due to historic geographic circumstances (Sanction B applies). Players entering National Championships in another country are eligible to participate.
- 64.1.4** Each match shall be 18 ends, three bowls each player. In the event of the scores being equal when all the ends have been played, an extra end or ends shall be played until a result is reached.
- 64.1.5** The two players taking part in the first match constitutes the original team and shall normally play together throughout the competition. In the event of a substitute being required, one and the same male and/or one and the same female player may come from any club, in the same county, providing they have not already played in the same competition. One of the original players shall play in all rounds. The substitute may play in any position. (Sanction H applies).

If the named entrant is unable to participate in the first match, the named entrant is the only substitute that can be brought into the team in all future rounds unless 52.2.2.2 applies.

64.2 Final Stages

- 64.2.1** The last 8 shall compete at the National finals on a knockout basis at a time set by Bowls England. The draw shall be made by Bowls England.
- 64.2.2** Each Team qualifying for the final stages shall supply to Bowls England the name of each player upon request. The players involved in the National Finals shall receive a National Competition participation badge.
- 64.2.3** Bowls England shall provide bowls stickers for the final stages of this event.
- 64.2.4** Both Winners and Runners Up shall be presented with a medal and invited to the Champions Dinner. The Winners will each receive a Winner's Jacket.

Regulation 65: National Mixed Fours

This regulation should be read in conjunction with Regulation 52 – Bowls England Managed National Championships

65.1 General

- 65.1.1** The competition shall be open to all members of clubs affiliated to Bowls England.
- 65.1.2** A team shall comprise of two men and two women. Any player may skip.
- 65.1.3** Players shall play from the same county in which they play their National Championships, with the exception of those clubs affiliated to two counties due to historic geographic circumstances (Sanction B applies). Players entering National Championships in another country are eligible to participate.
- 65.1.4** Each match shall be 18 ends, two bowls each player. In the event of the scores being equal when all the ends have been played, an extra end or ends shall be played until a result is reached.
- 65.1.5** The four players taking part in the first match constitutes the original team and shall normally play together throughout the competition. In the event of a substitute being required, one and the same male and/or one and the same female player may come from any club, in the same county, providing they have not already played in the same competition. One male and one female of the original players shall play in all rounds. The substitute may play in any position. (Sanction H applies).

If the named entrant is unable to participate in the first match, the named entrant is the only substitute that can be brought into the team in all future rounds unless 52.2.2.2 applies.

65.2 Final Stages

- 65.2.1** The last 8 shall compete at the National Finals on a knockout basis at a time set by Bowls England. The draw shall be made by Bowls England.
- 65.2.2** Each Team qualifying for the final stages shall supply to Bowls England the names of their team players upon request. The players involved in the National Finals shall receive a National Competition participation badge.
- 65.2.3** Bowls England shall provide bowls stickers for the final stages of this event.
- 65.2.4** Both Winners and Runners Up shall be presented with a medal and invited to the Champions Dinner. The Winners will each receive a Winner's Jacket.

Regulation 66: National Family Pairs

This regulation should be read in conjunction with Regulation 52 – Bowls England Managed National Championships

66.1 General

66.1.1 The competition shall be open to all playing members of clubs affiliated to Bowls England who have not participated in any of the following events since and including 2021:

- International play (including U25 and U18 internationals)
- Walker Cup
- Balcomb Trophy

66.1.2 A team shall be comprised of two players. Either player may skip.

66.1.3 Players need not necessarily be members of the same club or county. Players entering National Championships in another country are eligible to participate.

66.1.4 Each match shall be 18 ends, three bowls each player. In the event of the scores being equal when all the ends have been played, an extra end or ends shall be played until a result is reached.

66.1.5 Eligible players should be from one of the following pairings:

- Grandmother and granddaughter/grandson
- Grandfather and granddaughter/grandson
- Mother and daughter/son
- Father and daughter/son
- Sister and sister/brother
- Brother and brother/sister
- Step relatives of the above are also eligible to play
- Marriage
- Civil Partnership

The following pairings and/or players are therefore not eligible:

- In-laws
- International Players since 1st April 2021
- Anyone who has played Walker Cup or Balcomb Trophy since 1st April 2021

Sanction B applies to any entries that do not meet the eligibility criteria.

66.1.6 Relationship between players and/or information on playing experience shall be declared on request.

66.1.7 The two players taking part in the first match constitutes the original team and shall normally play together throughout the competition. At least one of the original pair shall play in every round. Substitutes shall come from one of the



eligible listings and shall not have already played or entered the same competition. (Sanction H applies)

If the named entrant is unable to participate in the first match, the named entrant is the only substitute that can be brought into the team in all future rounds unless 52.2.2.2 applies.

66.1.8 Each match shall be 18 ends, three bowls each player. In the event of the scores being equal when all the ends have been played, an extra end or ends shall be played until a result is reached.

66.1.9 Junior/Cub bowls may be used.

66.2 Final Stages

66.2.1 The Quarter Finals, Semi-Finals and Final shall be played on a date set by Bowls England during the National Finals. The draw shall be made by Bowls England.

66.2.2 Each team qualifying for the final stages shall supply to Bowls England the name of their partner upon request. The players involved shall receive a National Competition participation badge.

66.2.3 Bowls England shall provide bowls stickers for the final stages of this event.

65.2.5 Both Winners and Runners Up shall be presented with a medal and invited to the Champions Dinner. The Winners will each receive a Winner's Jacket.

Regulation 67: National Foundation Pairs

This regulation should be read in conjunction with Regulation 52 – Bowls England Managed National Championships

67.1 General

67.1.1 The competition shall be open to playing members of clubs affiliated to Bowls England.

67.1.2 A team shall consist of two players each playing three bowls each. Either player may skip.

67.1.3 Both players must represent the same Club this being where they have entered National Championships.

67.1.4 Eligibility: Neither player in the pair must have previously qualified for the National Finals in any event listed below:

- Four-Bowl Singles
- Pairs
- Triples
- Fours
- Over 55 Fours (Senior Fours)
- U25 Singles
- U25 Pairs
- Two-Bowl Singles
- Champion of Champions
- Balcomb Trophy
- Walker Cup

Players who have participated at the National Finals in any events not listed above are eligible to enter.

At least one player (or both) in the pair must have fewer than five years of playing experience, as determined by their initial club or association membership, and must have begun playing bowls on or after 1 April 2021.

Five years playing experience includes all bowls codes e.g. indoors, outdoors, crown green, short mat etc

All players under 17 are eligible regardless of playing experience.

The following are eligible pairings for 2026 season:

- One player who has never played at national finals in listed events AND One player who has less than five years bowling experience
- One player who has never played at national finals in listed events AND One player aged under 17 on 1st April 2026

- One player who has less than five years bowling experience AND One player aged under 17 on 1st April 2026
- Two players with less than five years bowling experience
- Two players aged under 17 on 1st April 2026

Sanction B applies to any entries that do not meet the eligibility criteria.

67.1.5 All entries will be accepted in good faith. Playing history of entered players shall be declared on request.

67.1.6 The two players taking part in the first match constitutes the original team and shall normally play together throughout the competition. At least one of the original pair shall play in every round. Substitutes shall come from one of the eligible listings, shall not have already played or entered the same competition (Sanction H applies) and will not impact on the eligibility requirements for this event.

If the named entrant is unable to participate in the first match, the named entrant is the only substitute that can be brought into the team in all future rounds unless 52.2.2.2 applies.

67.1.7 Each match shall consist of 2 sets of 9 ends, 1 point for a set win, ½ point for a set tie. A set will be decided if at any point it becomes impossible to win, or draw given the number of ends remaining.

If the scores are equal when both sets have been played, an additional three ends shall be played in a tie-breaker until a set result is reached.

After completing a set, each team has the option to change playing positions, however the opposition must be informed of the change before the jack is cast, indicating the start of the next set or additional end(s).

67.1.8 First set: the skips must toss a coin and the winner of the toss has the option of starting or giving away the jack in the first set. **Second set:** the winner of the first set must place the mat and then deliver the jack and the first bowl. If the first set is a draw, the winner of the last scoring end in that set must place the mat and then deliver the jack and the first bowl.

67.1.9 If the game is tied after the two sets have been completed (each team having won one set or both sets having been drawn), a tie-breaker consisting of three ends must be played to decide the winner.

First, fourth and any further ends of a tie-breaker: the skips must toss a coin and the winner of the toss has the option of starting or giving away the jack on the first end. On the second and third ends the winner of the previous scoring end must place the mat and then deliver the jack and the first bowl. If the first end is a tied end, the player who played first on the first end must also play first in the second end of the tie-breaker.



- 67.1.9.1** The winner of the tie-breaker will be the player or team with the highest number of shots when the third end is completed. All shots count on all three ends.
- 67.1.9.2** There must be no further play in the tie-breaker if, at any point, it becomes impossible for one player or team to draw or win the tiebreaker, given the number of ends left.
- 67.1.9.3** If the shot scores are tied after the third end of the tie-breaker, the players or teams must play a fourth tie-breaker end to decide the winner.
- 67.1.9.4** If the fourth end of a tie-breaker is a tied end, the players or teams will play more tie-breaker ends until a winner is found.
- 67.1.10** If the jack is killed on any end in the match, the end is replayed.
- 67.1.11** Junior/Cub bowls may be used.

67.2 Final Stages

- 67.2.1** The Quarter-Finals, Semi-Finals and Final shall be played during the National Bowls Finals. The draw shall be made by Bowls England.
- 67.2.2** Each team qualifying for the final stages shall supply to Bowls England the name of their partner upon request. The players involved shall receive a National Competition participation badge.
- 67.2.3** Bowls England shall provide bowls stickers for the final stages of this event.
- 67.2.4** Both Winners and Runners Up shall be presented with a medal and invited to the Champions Dinner. The Winners will each receive a Winner's Jacket.

Regulation 68: National Under 17's Singles

This regulation should be read in conjunction with Regulation 52 – Bowls England Managed National Championships

68.1 General

- 68.1.1** The competition shall be open to members of clubs affiliated to Bowls England.
- 68.1.2** Each player shall be under 17 years of age on the 1st April in the year of the competition. (Sanction B applies)
- 68.1.3** Players shall play from the same county in which they play their National Championships. Players entering National Championships in another country are not eligible to participate. (Sanction B applies)
- 68.1.4** Matches shall be first to 21 shots (four bowls each player).
- 68.1.5** Junior/Cub bowls may be used.
- 68.1.6** In all rounds, if a jack is declared dead, the jack is to be re-spotted two metres from the ditch and on the centre line (the T). If the spot (T) is partly or completely covered by a bowl, the jack must be placed as close as possible to the covered spot (T), between and in line with that spot (T) and the corresponding spot (T) at the opposite end of the rink, without touching a bowl.

68.2 Final Stages

- 69.2.1** The quarter finalists shall compete at the National finals on a knockout basis at a time set by Bowls England. The draw shall be made by Bowls England.
- 69.2.2** All players involved at the National Finals shall receive a National Competition participation badge.
- 69.2.3** Bowls England shall provide bowls stickers for the final stages of this event.
- 69.2.4** The Winners shall be presented with a medal and receive a Winner's Jacket.
- 69.2.5** The winner of both the Men's and Women's event will be invited to represent England in the British Bowls Championships the following year.

Regulation 69: Para Open Singles

69.1 General

- 69.1.1** The competition shall be open to members of clubs affiliated to Bowls England.
- 69.1.2** Each player shall be registered through Bowls England with a disability in the year of the competition. (Sanction B applies)
- 69.1.3** Players entering National Championships in another country are eligible to participate.

69.2 Group stages

- 69.2.1** Singles (four bowls each player, first to 21)
- 69.2.2** Each match will be limited to a time limit of one hour 15 minutes (excluding trial ends). If the match is timed out, the player with the most shots is deemed the winner.
- 69.2.3** Each match must be played to conclusion unless a match is 'timed out'.
- 69.2.4** In the event of a 'dead end' the jack will be re-spotted on the 'T' (or as near as possible to the T in line with the current Laws of the Sport).
- 69.2.5** The Controlling Body will determine the rinks to be played on during each session. Rink allocations are subject to change at any time prior to the trial ends for a specific session at the discretion of the Controlling Body. Whilst we shall seek to avoid the same player playing on the same rink during the event, due to the number of matches and participants this may be unavoidable. In accordance with Law 3.4 of the current Laws of the Sport, Bowls England permits this for the events covered by these Conditions of Play.
- 69.2.6** A horn (or similar) will be used by the designated timekeeper to signal the official start of the trial ends. Players/teams not in attendance at this time will forfeit the right to trial end/s – trials ends may be played by those present at the official start time. Following conclusion of trial ends play is to be continuous in all disciplines.

Five minutes prior to the end of the allocated time, the designated timekeeper will use a horn (or similar) to signal the end of session. At this point teams will complete the current end they are playing. The start of an end is determined by the correct delivery of the jack by the first player in that end. When the horn (or similar) is sounded no more jacks shall be cast.
- 69.2.7** One trial end in each direction will be allowed for all games. In trial ends players can use any combination of bowls taken from different sets – the number of bowls used shall not exceed those to be used in the game.



69.2.8 Scoring

- 2 pts for a win
- 1 pt for a draw

69.2.9 Group Winners and the highest runners up from Groups of 5 with 16 players qualify for the Aviva National Bowls Finals. The number of highest runners up qualifying will depend on how many groups are competing. *The competitions committee reserve the right to amend subject to the final numbers participating.*

69.2.10

Qualification from each group will be determined by (in order):

1. Overall points
2. Overall shots difference
3. Overall shots scored
4. If there is a 'tie' between two players once these factors are taken into account, the result in the match between the two players concerned will determine the group winner.
5. Should this still not produce a winner a three-end tie-break will be played to determine the winner. In the tie-break there is one shot available per end. The winner will be the player who wins two ends.

The highest runner-up from groups of 5 will follow the qualification rules 1-3. If there is a tie then ends won will be used to determine the qualifier.

69.3 Final Stages

69.3.1 The last 16 shall compete at the National Bowls Finals on a knockout basis at a time set by Bowls England.

69.3.2 Four bowls each player played to 21 shots or a maximum of 2 hours and 30 minutes (Including Trial Ends).

69.3.3 If the match is timed out and the scores are level an extra end must be played to determine the winner.

69.3.4 The draw shall be made by Bowls England.

69.3.5 All players involved at the National Finals shall receive a National Competition participation badge.

69.3.6 Bowls England shall provide bowls stickers for the final stages of this event.

69.3.7 The Winner shall be presented with a medal and receive a Winner's Jacket.



Regulation 70: Para Open Pairs

70.1 General

- 70.1.1** The competition shall be open to members of clubs affiliated to Bowls England.
- 70.1.2** Each player shall be registered through Bowls England with a disability in the year of the competition. (Sanction B applies)
- 70.1.3** A team shall consist of two players each playing three bowls each. Either player may skip.
- 70.1.4** Players need not necessarily be members of the same club or county. Players entering National Championships in another country are eligible to participate.

70.2 Group stages

70.2.1 Pairs (three bowls each player)

- The players will toss for the jack.
- 2 Trial ends to be played then all teams to start together
- Each match will be played to 15 ends or to a time limit of 1 hour and 15 minutes (excluding trial ends)
- All ends must be played unless a game is 'timed out'
- If the match is timed out, the team with the most shots is deemed the winner. If level the match is a draw.
- In the event of a 'dead end' the jack will be re-spotted on the T (or as near as possible to the T in line with the current Laws of the Sport)

70.2.2 The Controlling Body will determine the rinks to be played on during each session. Rink allocations are subject to change at any time prior to the trial ends for a specific session at the discretion of the Controlling Body. Whilst we shall seek to avoid the same player playing on the same rink during the event, due to the number of matches and participants this may be unavoidable. In accordance with Law 3.4 of the current Laws of the Sport, Bowls England permits this for the events covered by these Conditions of Play.

70.2.3 A horn (or similar) will be used by the designated timekeeper to signal the official start of the trial ends. Players/teams not in attendance at this time will forfeit the right to trial end/s – trials ends may be played by those present at the official start time. Following conclusion of trial ends play is to be continuous in all disciplines.

Five minutes prior to the end of the allocated time, the designated timekeeper will use a horn (or similar) to signal the end of session. At this point teams will complete the current end they are playing. The start of an end is determined by the correct delivery of the jack by the first player in that end. When the horn (or similar) is sounded no more jacks shall be cast.

70.2.4 One trial end in each direction will be allowed for all games. In trial ends players can use any combination of bowls taken from different sets – the number of bowls used shall not exceed those to be used in the game.

70.2.5 Scoring

- 2 pts for a win
- 1 pt for a draw

70.2.6 Qualification from each group will be determined by (in order)

- Overall points
- Overall shots difference
- Overall shots scored
- If there is a 'tie' between two teams once these factors are taken into account, the result in the match between the two teams concerned will determine the group winner.
- Should this still not produce a winner a three-end tie-break will be played to determine the winner. In the tie-break there is one shot available per end. The winner will be the player who wins two ends.

70.2.7 Group Winners & Runners up will qualify for the National Bowls Finals.
The competitions committee reserve the right to amend subject to the final numbers participating.

70.3 Final Stages

70.3.1 The last 8 shall compete at the National finals on a knockout basis at a time set by Bowls England.

70.3.2 Three bowls each player played to 15 ends or a maximum of 2 hours and 30 minutes (Including Trial Ends).

70.3.3 If the match is timed out and the scores are level an extra end must be played to determine the winner. The players will toss for the jack.

70.3.4 The draw shall be made by Bowls England.

70.3.5 All players involved at the National Finals shall receive a National Competition participation badge.

70.3.6 Bowls England shall provide bowls stickers for the final stages of this event.

70.3.7 The Winners shall be presented with a medal and each receive a Winner's Jacket.

Sanctions

| Sanction Ref | Sanction |
|--------------|--|
| A | If entries are not received by the closing date, late entries will not be accepted. |
| B | Should a player (and their team/side where applicable) be found to be ineligible prior to the start of a match or within 24 hours of the conclusion of that match (in writing by email notification to Bowls England), their opponent in that round will be granted a walkover. If more than 24 hours have elapsed since the conclusion of the match, then the ineligible player (and their team/side where applicable) will be disqualified and their opponent in the next round will be granted a walkover. |
| C | Champion of Champions If written approval from the club official where qualification was secured is not received by Bowls England the offending player will be disqualified. |
| D | Inter Club – Knockout Rounds Any team found to have fielded an ineligible player will be disqualified – Sanction B applies. Inter County – Knockout Rounds Any team found to have fielded an ineligible player will be disqualified – Sanction B applies. Inter County – Middleton and Johns Group Stages Any team found to have fielded an ineligible player in any match will concede the match to their opponent (22 points and 30 shots). |
| E | Offering of Dates – In an opening match 1. If the challenger (Player A) offers non-eligible dates, the opponent (Player B) must request eligible dates. 2. Failure by the challenger (Player A) to offer eligible dates in advance of 14 days of the closing date of the round, the opponent (Player B) will become the challenger, and must make all match arrangements in advance of 13 days of the closing date of the round. 3. Failure by the opponent (Player A) to accept a date in advance of 19 days of the closing date of the round– the challenger (Player B) may claim the game. Failure by the opponent (Player receiving dates) to accept a date in advance of 12 days of the closing date of the round– the challenger (Player offering dates) may claim the game. 4. Failure to offer eligible dates having become challenger (Player B) – both parties disqualified. 5. Failure by both players/teams/sides to offer dates – both parties disqualified 6. If anyone wishes to make a claim, written evidence will be required. |
| F | Offering of Dates – Subsequent Rounds 1. If the challenger (Player A) offers non-eligible dates, the opponent (Player B) must request eligible dates. |

| | |
|---|--|
| | <p>2. Failure by the challenger (Player A) to offer eligible dates within 24 hours of the previous round, the opponent (Player B) will become the challenger and must make all match arrangements within 48 hours of the previous round.</p> <p>3. Failure by the opponent (Player A) to accept a date within 72 hours of the previous round– the challenger (Player B) may claim the game.</p> <p>Failure by the opponent (Player receiving dates) to accept a date within 72 hours of the previous round– the challenger (Player offering dates) may claim the game.</p> <p>4. Failure to offer eligible dates having become challenger (Player B) – both parties disqualified.</p> <p>5. If anyone wishes to make a claim, written evidence will be necessary.</p> <p>6. Failure by both players/teams/sides to offer dates – both parties disqualified</p> |
| G | <p>International Duty County association must accommodate in accordance with 50.2.2</p> |
| H | <p>Substitutions - Individual Competitions: At least one player who participated in the opening match must play in all subsequent rounds (mixed fours one of each gender applies).</p> <p>Any team that does not field a player who participated in the opening match in subsequent rounds will be disqualified. Sanction B then applies.</p> |
| I | <p>If a player/team is not ready to play within 30 minutes after the agreed start time in any round, their opponent/team may claim a walkover. No walkover can be claimed once a game has started.</p> |
| J | <p>Should the Challenger not offer a draw for rinks or if rinks offered are not on the markers as set out prior to the draw takes place, then the Opponent may claim a walkover prior to the start of the match. Should the game commence then no walkover may be claimed.</p> |
| K | <p>If a player/side do not adhere to the dress code, they will receive a written warning from the competition administrator regarding future conduct in that event.</p> <p>The offending player/side will be disqualified and their opponent in the next round awarded a walkover should there be a further reported instance in the same event.</p> |
| L | <p>Any bowls that do not meet the requirements for that event may not be used. See Appendix G for detail.</p> |
| M | <p>Result Submission If no result for a match has been submitted within 24 hours of the closing date of the previous round both parties will be subject to disqualification.</p> |
| N | <p>National Finals: If a player/team is not ready to play within 15 minutes after the agreed start time in any round, their opponent/team will be given a walkover. Should the game commence then no walkover may be claimed.</p> |
| O | <p>National Finals: All players must abide by the Slow Play appendix. Failure to adhere will result in disqualification. See Appendix K for detail.</p> |
| P | <p>National Finals: Failure for winning player/team to take signed scorecard/s to Tournament Office within 15 minutes of the end of the game will result in disqualification.</p> |



Q

National Finals: If a finalist does not attend the Trophy Presentation, all prize money will be donated to the EBA Charity Trust.

Appendices

Appendix A1 - Dress code: County Administered National Championships – all Rounds prior to National Finals

Please note: All reference to white clothing should read 'predominately white'

Above the Waist – Sanction K will apply if not adhered to

All members of the side or team shall wear the same colour above the waist

Playing Shirt:

- Club
- White Polo Top / Shirt
- Bowls England International Playing kit not permitted

Pullover/Hoodie/Gilet or Cardigan:

- Club
- White equivalent.
- Bowls England International Playing kit not permitted

Jacket:

- Club
- White
- Bowls England International Playing kit not permitted

Waterproofs/Rainwear:

- White
- Club

Headgear:

- White
- Club

Footwear – Sanction K will apply if not adhered to

Shoes / Trainers:

- Flat soled ('heel-less') footwear no colour restrictions

Sandals

- Sandals shall not be permitted except in medical circumstances where a doctor's note has been provided.

In all of the above players governed by requirements of a specific ethnic culture shall be permitted to wear their traditional dress if they so desire.

Players may wear alternative clothing or footwear for medical reasons if supported by a brief note from a healthcare professional, while maintaining the spirit of the game.

[Click here](#) for further information on Dress Code



Appendix A1 (Cont.) - Dress code: County Administered National Championships – all Rounds prior to National Finals

Please note: All reference to white clothing should read 'predominately white'

Below the Waist – Sanction K will apply if not adhered to

All members of the side or team shall wear the same colour below the waist

Trousers:

- Permitted Colours:
White, Grey, Black, Blue, Navy, Red, Maroon, Green
- Club
- Bowls England International Playing kit not permitted
- Belt (if worn) to match
- No jeans permitted to be worn

Shorts:

- Permitted Colours:
White, Grey, Black, Blue, Navy, Red, Maroon, Green
- Club
- Bowls England International Playing kit not permitted
- Belt (if worn) to match
- No jeans permitted to be worn

Cropped Trousers/Culottes:

- Permitted Colours:
White, Grey, Black, Blue, Navy, Red, Maroon, Green
- Club
- Belt (if worn) to match
- No jeans permitted to be worn

Skirts/Skorts:

- Permitted Colours:
White, Grey, Black, Blue, Navy, Red, Maroon, Green
- Club
- Belt (if worn) to match
- No jeans permitted to be worn

Waterproofs/Rainwear:

- White
- Club

In all of the above players governed by requirements of a specific ethnic culture shall be permitted to wear their traditional dress if they so desire.

Players may wear alternative clothing or footwear for medical reasons if supported by a brief note from a healthcare professional, while maintaining the spirit of the game.

[Click here](#) for further information on Dress Code



Appendix A2 - Dress code: County Administered National Championships – at National Finals

Please note: All reference to white clothing should read 'predominately white'

Above the Waist – Sanction K will apply if not adhered to

All members of the side or team shall wear the same colour above the waist

Playing Shirt:

- County

Jacket:

- County
- White
- Bowls England International Playing kit not permitted

Headgear:

- White
- County

Pullover/Hoodie/Gilet or Cardigan:

- County
- White or equivalent
- Bowls England International Playing kit not permitted

Waterproofs/Rainwear:

- White
- County

Footwear – Sanction K will apply if not adhered to

Shoes / Trainers:

- Flat soled ('heel-less') footwear no colour restrictions

Sandals

- Sandals shall not be permitted except in medical circumstances where a doctor's note has been provided.

In all of the above players governed by requirements of a specific ethnic culture shall be permitted to wear their traditional dress if they so desire.

Players may wear alternative clothing or footwear for medical reasons if supported by a brief note from a healthcare professional, while maintaining the spirit of the game.

[Click here](#) for further information on Dress Code



Appendix A2 (Cont.) - Dress code: County Administered National Championships – at National Finals

Please note: All reference to white clothing should read 'predominately white'

Below the Waist – Sanction K will apply if not adhered to

All members of the side or team shall wear the same colour below the waist

Trousers:

- County
- County recognised colours
- Belt (if worn) to match
- No jeans permitted to be worn

Shorts:

- County
- County recognised colours
- Belt (if worn) to match
- No jeans permitted to be worn

Cropped Trousers/Culottes:

- County
- County recognised colours
- Belt (if worn) to match
- No jeans permitted to be worn

Skirts/Skorts:

- County
- County recognised colours
- Belt (if worn) to match
- No jeans permitted to be worn

Waterproofs/Rainwear:

- White
- County

In all of the above players governed by requirements of a specific ethnic culture shall be permitted to wear their traditional dress if they so desire.

Players may wear alternative clothing or footwear for medical reasons if supported by a brief note from a healthcare professional, while maintaining the spirit of the game.

[Click here](#) for further information on Dress Code



Appendix B1 - Dress code: Bowls England Managed National Championships – Early Rounds

(Individual Competitions, Inter-Club Competitions & Inter-County Competitions)

Please note: All reference to white clothing should read 'predominately white'

Above the Waist – Sanction K will apply if not adhered to. Please note that all members of the side or team shall wear the same Club Apparel/colour above the waist.

- If from different clubs then default is white.
- If Club apparel is not the same design for men/women in mixed events, then default is white.
- County apparel is only to be worn when representing your County Association in Inter-County Competitions*

Playing Shirt:

- Club
- White Polo Top / Shirt / Bowls Shirt
- County*
- Bowls England International Playing kit not permitted

Pullover/Hoodie/Gilet or Cardigan:

- Club
- County*
- White or equivalent
- Bowls England International Playing kit not permitted

Jacket:

- Club
- County*
- White
- Bowls England International Playing kit not permitted

Waterproofs/Rainwear:

- White
- Club
- County*

Headgear:

- White
- Club
- County*

Footwear – Sanction K will apply if not adhered to

Shoes / Trainers:

- Flat soled ('heel-less') footwear no colour restrictions

Sandals:

- Sandals shall not be permitted except in medical circumstances where a doctor's note has been provided.

In all of the above players governed by requirements of a specific ethnic culture shall be permitted to wear their traditional dress if they so desire.

Players may wear alternative clothing or footwear for medical reasons if supported by a brief note from a healthcare professional, while maintaining the spirit of the game.

[Click here](#) for further information on Dress Code

Appendix B1 (Cont.) - Dress code: Bowls England Managed National Championships – Early Rounds

(Individual Competitions, Inter-Club Competitions & Inter-County Competitions)

Please note: All reference to white clothing should read 'predominately white'

Below the Waist – Sanction K will apply if not adhered to

- Please note that all members of the side or team shall wear the same Club apparel/colour above the waist.
- If from different clubs then default is white.
- If Club apparel is not the same design for men/women in mixed events then default is white.
- County apparel is only to be worn when representing your County Association in Inter-County Competitions*

Trousers:

- Permitted Colours:
White, Grey, Black, Blue, Navy, Red, Maroon, Green
- Club
- County*
- Bowls England International Playing kit not permitted
- Belt (if worn) to match
- No jeans permitted to be worn

Shorts:

- Permitted Colours:
White, Grey, Black, Blue, Navy, Red, Maroon, Green
- Club
- County*
- Bowls England International Playing kit not permitted
- Belt (if worn) to match
- No jeans permitted to be worn

Cropped Trousers/Culottes:

- Permitted Colours:
White, Grey, Black, Blue, Navy, Red, Maroon, Green
- Club
- County*
- Bowls England International Playing kit not permitted
- Belt (if worn) to match
- No jeans permitted to be worn

Skirts/Skorts:

- Permitted Colours:
White, Grey, Black, Blue, Navy, Red, Maroon, Green
- Club
- County*
- Belt (if worn) to match
- No jeans permitted to be worn

Waterproofs/Rainwear:

- White
- Club

In all of the above players governed by requirements of a specific ethnic culture shall be permitted to wear their traditional dress if they so desire.

Players may wear alternative clothing or footwear for medical reasons if supported by a brief note from a healthcare professional, while maintaining the spirit of the game.

[Click here](#) for further information on Dress Code



Appendix B2 - Dress code: Bowls England Managed National Championships – National Finals

(Individual Competitions, Inter-Club Competitions & Inter-County Competitions)

Please note: All reference to white clothing should read 'predominately white'

Above the Waist – Sanction K will apply if not adhered to

- Please note that all members of the side or team shall wear the same Club or County apparel/colour above the waist.
- If from different clubs then default is white.
- If Club/County apparel is not the same design for men/women in mixed events, then default is white.

Playing Shirt:

- Club
- County
- White Polo Top / Shirt / Bowls Shirt
- Bowls England International Playing kit not permitted

Pullover/Hoodie/Gilet or Cardigan:

- Club
- County
- White or equivalent
- Bowls England International Playing kit not permitted

Jacket:

- Club
- County
- White
- Bowls England International Playing kit not permitted

Waterproofs/Rainwear:

- White
- Club
- County

Headgear:

- White
- Club
- County

Footwear – Sanction K will apply if not adhered to

Footwear:

- Flat soled ('heel-less') footwear no colour restrictions

Sandals:

- Sandals shall not be permitted except in medical circumstances where a doctor's note has been provided.

In all of the above players governed by requirements of a specific ethnic culture shall be permitted to wear their traditional dress if they so desire.

Players may wear alternative clothing or footwear for medical reasons if supported by a brief note from a healthcare professional, while maintaining the spirit of the game.

[Click here](#) for further information on Dress Code



Appendix B2 (Cont.) - Dress code: Bowls England Managed National Championships – National Finals

(Individual Competitions, Inter-Club Competitions & Inter-County Competitions)

Please note: All reference to white clothing should read 'predominately white'

Above the Waist – Sanction K will apply if not adhered to

- Please note that all members of the side or team shall wear the same Club or County apparel/colour above the waist.
- If from different clubs then default is white.
- If Club/County apparel is not the same design for men/women in mixed events, then default is white.

Trousers:

- Permitted Colours:
White, Grey, Black, Blue, Navy, Red, Maroon, Green
- Club
- County
- Bowls England International Playing kit not permitted
- Belt (if worn) to match
- No jeans permitted to be worn

Shorts:

- Permitted Colours:
White, Grey, Black, Blue, Navy, Red, Maroon, Green
- Club
- County
- Bowls England International Playing kit not permitted
- Belt (if worn) to match
- No jeans permitted to be worn

Cropped Trousers/Culottes:

- Permitted Colours:
White, Grey, Black, Blue, Navy, Red, Maroon, Green
- Club
- County
- Belt (if worn) to match
- No jeans permitted to be worn

Skirts/Skorts:

- Permitted Colours:
White, Grey, Black, Blue, Navy, Red, Maroon, Green, W
- Club
- County
- Belt (if worn) to match
- No jeans permitted to be worn

Waterproofs/Rainwear:

- White
- Club
- County

In all of the above players governed by requirements of a specific ethnic culture shall be permitted to wear their traditional dress if they so desire.

Players may wear alternative clothing or footwear for medical reasons if supported by a brief note from a healthcare professional, while maintaining the spirit of the game.

[Click here](#) for further information on Dress Code



Appendix C: Draw for Rinks

1. A draw for rink/s to be played on shall be made in accordance with the current Laws of the Sport (Law 1.3).
2. For a match requiring one rink, a minimum of two rinks shall be offered to the opponent.
3. For a match requiring more than one rink, the minimum number of rinks offered shall be at least equal to the number of rinks required as follows:
 - i. One rink required = Two rinks offered
 - ii. Two rinks required = Two rinks offered
 - iii. Four rinks required = Four rinks offered
 - iv. Five rinks required = Five rinks offered
 - v. Six rinks required = Six rinks offered
4. How rinks are determined for play is a domestic matter.
5. Rink markings must not be changed once the draw for rinks has been made. (Sanction J). If rinks are marked up in both directions the direction of play must be stipulated prior to rinks being offered (Sanction J).

Appendix D: Umpires

Umpires shall be appointed to officiate by the County Association or Bowls England in conjunction with the English Bowls Umpires Association.

Appendix E: Smoking (including Electronic Cigarettes)

Smoking on the green is prohibited during all matches played under the jurisdiction of Bowls England. For the purpose of clarification, the 'green' in this instance is deemed to include a minimum of 2 metres of the bank surrounding the playing area. Should the Club where the game is being played have a total ban on smoking on its premises, the Club prohibition shall apply. Failure to adhere to this shall result in disqualification. This prohibition includes all electronic cigarettes/vapes.

Guidance regarding smoking during the National Bowls Finals will be published within the Event Competitor Pack.



Appendix F: Inclement Weather

Inclement weather shall mean the existence of rain or abnormal climatic conditions (whether they be those of heavy rain, thunder & lightning, hail, snow, cold, high wind, extreme high temperature or any combination thereof) by virtue of which it is either not reasonable or possible to play.

Unusual situations not covered within the above can often arise. If a situation arises that is not covered by the above, Players, Markers, Umpires and Officials shall use their common sense and a spirit of fair play to decide on the appropriate course of action.

In the event of inclement weather and no play/no further play being possible as determined by Tournament Director, Umpire and/or Greenkeeper (or players if no officials are in attendance) the following shall apply as relevant:

A. County Administered National Championships – all Rounds prior to National Finals

- A1.** All matches are to be played to a finish as referred within the Laws of the Sport V4 – Game Stoppages (Law 33)
- A2.** If it is not possible to conclude play on the day, then the match be completed prior to the next round taking place. If this is not possible, then provided circumstances permit Counties may in their discretion reschedule future rounds to accommodate.

B. Individual Bowls England Managed National Championships

- B1.** When a match is stopped by the Tournament Director, Umpire and/or Greenkeeper (or players if no officials are in attendance) play shall cease immediately. Ends started but not completed shall be declared 'dead'.
- B2.** When it is not possible to resume the match on the day:
 - a. If the total number of ends played equals or exceeds 5 (Five) the match shall be deemed to have been completed and the score shall stand.
 - b. If the total number of ends played is less than five, the remainder of the match shall, wherever possible, be played at a later date, (please refer to Laws of the Sport Law 33: Game Stoppages for guidance).
 - c. Should it not be possible to play the match to its conclusion by the closing date of the round, the winner shall be decided by the toss of a coin.
- B3.** At National Finals, the decision of the Tournament Director on postponed/abandoned matches shall be final.

C. Individual Bowls England Managed National Championships - Foundation Pairs

- C1.** When a match is stopped by the by Tournament Director, Umpire and/or Greenkeeper (or players if no officials are in attendance) play shall cease immediately. Ends started but not completed shall be declared 'dead'.

C2. Whenever possible, the remainder of the match will be played at a later date, (please refer to 'Laws of the Sport Law 33: Game Stoppages' for guidance).

C3. When it is not possible to resume the match on the day OR to re-arrange by the closing date of the round:

- a) A minimum of Five Ends constitutes a 'game'.
- b) If the First Set has been completed (five ends or more), the winner of the First Set shall be deemed the winner
- c) If the First Set was NOT completed the score at the conclusion of the last end played in that set (five ends or more) shall be the score and the pair leading at that point deemed the winner.
- d) If the First Set WAS a draw the winner shall be determined by the toss a coin

C4. In all cases, should it not be possible to play the match to its conclusion by the closing date of the round, the winner shall be decided by the toss of a coin.

D. Middleton Cup/Johns Trophy/O60 Mixed Inter-County

D1. When a match is stopped by the Umpire and/or the Greenkeeper play shall cease on all rinks simultaneously. Ends started but not completed shall be declared 'dead'.

D2. When it is not possible to resume the match on the day:

- a. If the total number of ends played equals or exceeds 42 the match shall be deemed to have been completed and the score shall stand.
- b. If the total number of ends played is less than 42, the remainder of the match shall be played at a later date (please refer to Laws of the Sport Law 33: Game Stoppages' for guidance).

D3. The participating counties shall agree a date for any postponed/abandoned match/es to be played.

D4. Bowls England shall make the final decision on the date/venue of a postponed/abandoned match/es should participating counties be unable to agree amicably.

D5. At National Finals, the decision of the Tournament Director on postponed/abandoned matches shall be final.

E. Balcomb Trophy/Walker Cup

E1. Further information will be included in the Conditions of Play for these events.

F. Amy Rose Bowl/White Rose Trophy

F1. Further information will be included in the Conditions of Play for these events.

G. Mixed Over 60 Inter-Club Two Fours (Tony Allcock)/Inter-Club Two Fours

- G1.** When a match is stopped by the Umpire and/or the Greenkeeper (or players if no officials are in attendance) play shall cease on all rinks simultaneously. Ends started but not completed shall be declared null and void.
- G2.** When it is not possible to resume the match on the day:
- a. If the total number of ends played equals or exceeds 10 the match shall be deemed to have been completed and the score shall stand.
 - b. If the total number of ends played is less than 10, the remainder of the match shall, wherever possible, be played at a later date (please refer to Laws of the Sport Law 33: Game Stoppages for guidance).
- G3.** Should it not be possible to play the match to its conclusion by the closing date of the round, the winner shall be decided by the toss of a coin.
- G4.** At National Finals, the decision of the Tournament Director on postponed/abandoned matches shall be final.

H. Top Club (Men's & Women's)

- H1.** When a match is stopped by the Umpire and/or the Greenkeeper (or players if no officials are in attendance) play shall cease on all rinks simultaneously. Ends started but not completed shall be declared null and void.
- H2.** When it is not possible to resume the match on the day:
- a. If the total number of ends played in each discipline equals or exceeds five the match shall be deemed to have been completed and the score shall stand.
 - b. If the total number of ends played in each discipline is less than five, the remainder of the match shall, wherever possible, be played at a later date (please refer to 'Law 33: Game Stoppages' for guidance).
- H3.** Should it not be possible to play the match to its conclusion by the closing date of the round, the winner shall be decided by the toss of a coin.
- H4.** At National Finals, the decision of the Tournament Director on postponed/abandoned matches shall be final.

Appendix G: Bowls

1 All Rounds prior to the National Finals

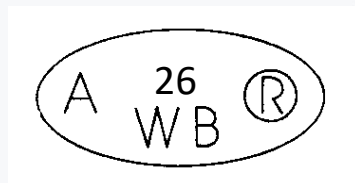
- 1.1 To include all National Championships up to and including the County Final. All early rounds and All England rounds in National Events. All Inter-County Competitions including Regional Finals.
- 1.2 All bowls shall bear a clearly legible stamp which has an expiry date of 1985 or later. These bowls can be used for the rounds leading to the National finals. All bowls shall be from the same set as stated in the Laws of the Sport V4 (Law 2.4).



- 1.3 Bowls that do not meet the requirements of 1.2 shall not be used (Sanction L)
- 1.4 Cub Bowls and Junior Bowls are exempt from being stamped.
- 1.5 In the rounds leading to the National Finals of the National Championships and National Events when no Umpire is present, the opposing player or players shall check the legality of the date stamp on each other's bowls.
- 1.6 Should a player wish to challenge the suitability of their opponent's bowls, as regards the bias, they should refer to The Laws of the Sport V4 (Laws 52.4 and 52.5). Bowls England Domestic Regulations also apply. The fee to be lodged shall be £50.

2 National Finals

- 2.1 All bowls must bear a stamp in accordance with the current Laws of the Sport V4 (Law 53). A World Bowls Ltd stamp with a date of the current year (2026) or later will be valid.



- 2.2 Bowls that do not meet the requirements of 2.1 shall not be used (Sanction L)
- 2.3 Should a player wish to challenge the suitability of their opponent's bowls, as regards the bias, they should refer to The Laws of the Sport V4 (52.4 and 52.5). Bowls England Domestic Regulations also apply. The fee to be lodged shall be £50.



Appendix H: Anti-Doping

The Anti-Doping rules of Bowls England are the UK Anti-Doping Rules published by UK Anti-Doping (or its successor), as amended from time to time. The UK Anti-Doping Rules can be viewed at: <https://www.ukad.org.uk/about/anti-doping-rules>

Appendix I: Bowls England Policies and Guidelines

All players must be aware and abide by Bowls England Regulation 2.5.2, which can be found [here](#). This includes, but is not limited to, abiding by all disciplinary/misconduct regulations and policies such as safeguarding, anti-doping and inclusion.



Appendix J: Players with Disabilities

Wheelchairs shall be of a type approved by Bowls England following consultation with relevant disability bowls organisations and greenkeepers. For guidance on purchasing a wheelchair [click here](#).

The wheelchair shall be recognised as being an integral part of the wheelchair player in all instances when a jack or bowl is displaced or interfered with by the wheelchair as per the current Laws of the Sport of Bowls.

At the point of delivery of the jack or bowl, refer to the current Laws of the Sport of Bowls V4.

Walking frames shall be of a type approved by Bowls England following consultation with relevant disability bowls organisations. The types currently recognised for use in England are the 'Rollator' (to be used to get to the green but not to be sat on the green during play), 'Bowls Buddy' and the 'Bowls Walker'.

Physically disabled bowlers may use a support such as the Bowls Mate or walking aid with a base at least than 76 millimetres in diameter as a support whilst bowling the jack or bowls or as an aid whilst walking.

A physically disabled player may kneel on the green to deliver the bowl or jack in accordance with the current laws of the game.

Artificial devices may be used by players with disabilities for delivering the jack or bowl provided they are approved by Bowls England following consultation with relevant disability bowls organisations. Currently this includes the standard bowling arm, the DHB Hacksaw bowling arm and the bowls launcher

The individual shall decide before a game starts if they are going to use an aid. If they decide to then they shall use it for the duration of that game.

Visually impaired bowlers can use any form of assistance necessary (including having director with them) to allow them to take part as long as the assistance is approved by Bowls England, this includes having a white breakable string down the centre or the rink. The director shall not be deemed to be in contravention of the Laws of the Sport if that director relays to the player the instruction of the skip, assists in directing the player or keeps the player informed as to where the jack or bowl finished after delivery. Visually Impaired players who are using a Director and String for a match out of courtesy are to inform the opposition and the Umpire before the match starts

Players with a hearing disability may use electronic devices (i.e. walkie-talkies) in line with the current Laws of the Sport of Bowls.

Appendix K: Time Limits

- The following time limits will apply to all matches taking place at the National Bowls Finals only.

| National Championships | Bowls Per Player | Format | Time Limit |
|-------------------------------|-------------------------|---|------------------------|
| Singles | 4 | 21 Shots | 2 hours and 30 minutes |
| Pairs | 4 | 18 ends | 3 hours and 30 minutes |
| Triples | 3 | 18 ends | 3 hours and 30 minutes |
| Fours | 2 | 18 ends | 3 hours and 30 minutes |
| Junior Singles | 4 | 21 Shots | 2 hours and 30 minutes |
| Junior Pairs | 3 | 18 ends | 2 hours and 30 minutes |
| Senior Fours | 2 | 18 ends | 3 hours and 30 minutes |
| Two Bowl Singles | 2 | 21 ends | 1 hour and 15 minutes |
| Senior Singles | 4 | 21 Shots | 2 hours and 30 minutes |
| Champion of Champions Singles | 4 | 21 Shots | 2 hours and 30 minutes |
| Senior Pairs | 3 | 18 ends | 2 hours and 30 minutes |
| Mixed Pairs | 3 | 18 ends | 2 hours and 30 minutes |
| Family Pairs | 3 | 18 ends | 2 hours and 30 minutes |
| Mixed Fours | 2 | 18 ends | 3 hours and 30 minutes |
| Under 17 Singles | 4 | 21 ends | 2 hours and 30 minutes |
| Foundation Pairs | 3 | 2 sets (Extra end(s) after 2 nd set if required) | 2 hours and 30 minutes |

| National Inter-Club Competitions | Bowls per Player | Format | Time Limit |
|---|-------------------------|---------------|-------------------|
|---|-------------------------|---------------|-------------------|

| | | | |
|--------------------------|-----------------|-----------------|------------------------|
| Club Two Fours | 2 | 18 ends | 3 hours and 30 minutes |
| Tony Allcock Trophy | 2 | 18 ends | 3 hours and 30 minutes |
| Men's & Women's Top Club | See Regulations | See Regulations | 3 hours and 30 minutes |

| National Inter-County Competitions | Bowls per Player | Format | Time Limit |
|---|-------------------------|-----------------|------------------------|
| Balcomb Trophy & Walker Cup; | See regulations | See regulations | 2 hours and 15 minutes |
| Amy Rose Bowl & White Rose Trophy | See regulations | See regulations | 1 hour and 15 minutes |
| Johns Trophy & Middleton Cup | 2 | 18 ends | 3 hours and 30 minutes |
| Inter County O60's | 2 | 18 ends | 3 hours and 30 minutes |

2. Any dispute regarding start/finish time to be forwarded to the green umpire in the first instance. If neither the umpire nor players/skips can resolve, the decision of the Tournament Director or deputy will be final.
3. Time limits to include trial ends.
4. In any end, the start of play is the delivery of the jack by the first player to play in that end. An end started must be completed once the time limit of the match has been reached.
5. The start time will be as published by Bowls England and teams/sides to record on the scorecard unless announced by the Green Umpire/Tournament Director or deputy.
6. Any disputes to be forwarded to the Green Umpire in the first instance.
7. If neither the Green Umpire nor players/skips can resolve, the decision of the Tournament Director (or nominated Deputy) will be final.



Appendix L: Slow Play

The following shall be enforced in the National Bowls Finals, only the Tournament Director (or Nominated Deputy) can disqualify players. See 'Time Limits' below which will be applied to all matches at the National Finals.

Four Bowl Singles

Players will only be allowed to walk up to the head under the following circumstances:

- After delivery of their third and fourth bowls. Should a player wish to visit the head prior to this point the permission of the marker shall be obtained.

Two Bowl Singles

Players will only be allowed to walk up to the head under the following circumstances:

- After delivery of their first bowl

Four Bowl Singles & Two Bowl Singles

The maximum time that a player may deliberate before playing a bowl is two minutes, the time being calculated from the time the previous bowl played came to rest. Should this rule be breached they shall be warned by the marker. A further non-compliance shall be reported by the Marker to an Umpire in charge of the green who will issue a second warning and inform the Tournament Director (or nominated Deputy). On a third occurrence the Tournament Director (or Nominated Deputy) will enforce Sanction N and disqualify the offending player from taking any further part in the competition.

Three Bowl Pairs

Players will only be allowed to walk up to the head under the following circumstances:

- The leads: after delivery of their third bowl
- The skips: after delivery of their second & third bowl

Four Bowl Pairs

Players will only be allowed to walk up to the head under the following circumstances:

- The leads: after delivery of their fourth bowl
- The skips: after delivery of their third and fourth bowl

Triples

Players will only be allowed to walk up to the head under the following circumstances:

- The leads: after delivery of their third bowl
- The seconds: after delivery of their second bowl
- The skips: after delivery of their second & third bowl

If twos up is played then both number twos must leave the head at the same time.

Fours

Players will only be allowed to walk up to the head under the following circumstances:

- The leads: after delivery of their second bowl
- The seconds: after delivery of their second bowl
- The thirds: after delivery of their first & second Bowl
- The skips: after delivery of their first & second Bowl



Pairs, Triples & Fours

The maximum time that a player may confer before delivering a bowl is two minutes, the time being calculated from the time the previous bowl played came to rest. Should this rule be breached the opposing skip will notify the Umpire. A further non-compliance observed by a nominated official will result in a second warning, the Tournament Director (or nominated Deputy) will be informed. On a third occurrence the Tournament Director (or Nominated Deputy) will enforce Sanction N and disqualify the offending team/side from taking any further part in the competition.

Appendix M: Code of Conduct

The Player Code of Conduct may be viewed [here](#).



Revisions since March 2026 Publication

| Date | Reg. | Details |
|-------------|------------|--|
| 13 May 2026 | 54.3 | Updated to include Preliminary Rounds |
| 13 May 2026 | 55.1 | Substitution wording expanded |
| 13 May 2026 | 67.1.9 | Updated order of play on Tie Break |
| 13 May 2026 | 68.1.6 | New rule – re-spots |
| 13 May 2026 | Appendix F | New rule – Foundation Pairs, renumbered after B |
| 26 May 2026 | 50.3.3 | New rule reference re-spots at the National Finals |
| 28 May 2026 | 50.3.3 | Moved to 51.2.9 |
| 28 May 2026 | 51.2.9 | Formally shown as 50.3.3 |
| | | |
| | | |
| | | |
| | | |
| | | |
| | | |
| | | |
| | | |
| | | |
| | | |